



Case Puma 210

£35,750.00 (ex VAT)

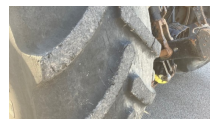
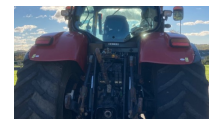
Details:

- Model year - 2011
- 50kph powershift transmission
- Front axle & cab suspension
- Front linkage with single auxiliary
- Pick-up hitch
- 4 x electric SCV's
- Air brakes
- Guidance complete
- APS pro 700 display
- Front tyres – Michelin 600/65 R28
- Rear tyres – Mitas 710/70 R38
- 9,705 hours

For more details, please contact Tom Yeatman on 07970 789 991 / 01300 348 881 or tom@smartagservices.co.uk

Specifications:

Model: **Case Puma 210**
 Engine Hours: **9,705**
 Year: **2011**
 Category: **Tractors**
 StockNumber: **(Dorchester)**



£35,750.00 (ex VAT)

© 2019 Hunt Forest Group

CHILBOLTON
Martins Lane,
Chilbolton,
Stockbridge,
Hampshire, SO20 6BL
T. +44 (0) 1264 860 532
F. +44 (0) 1264 860 837



<https://www.facebook.com/huntforestgroup>



<http://twitter.com/huntforestgroup>



<https://www.instagram.com/huntforestgroup/>

John Deere dealers UK/Ireland